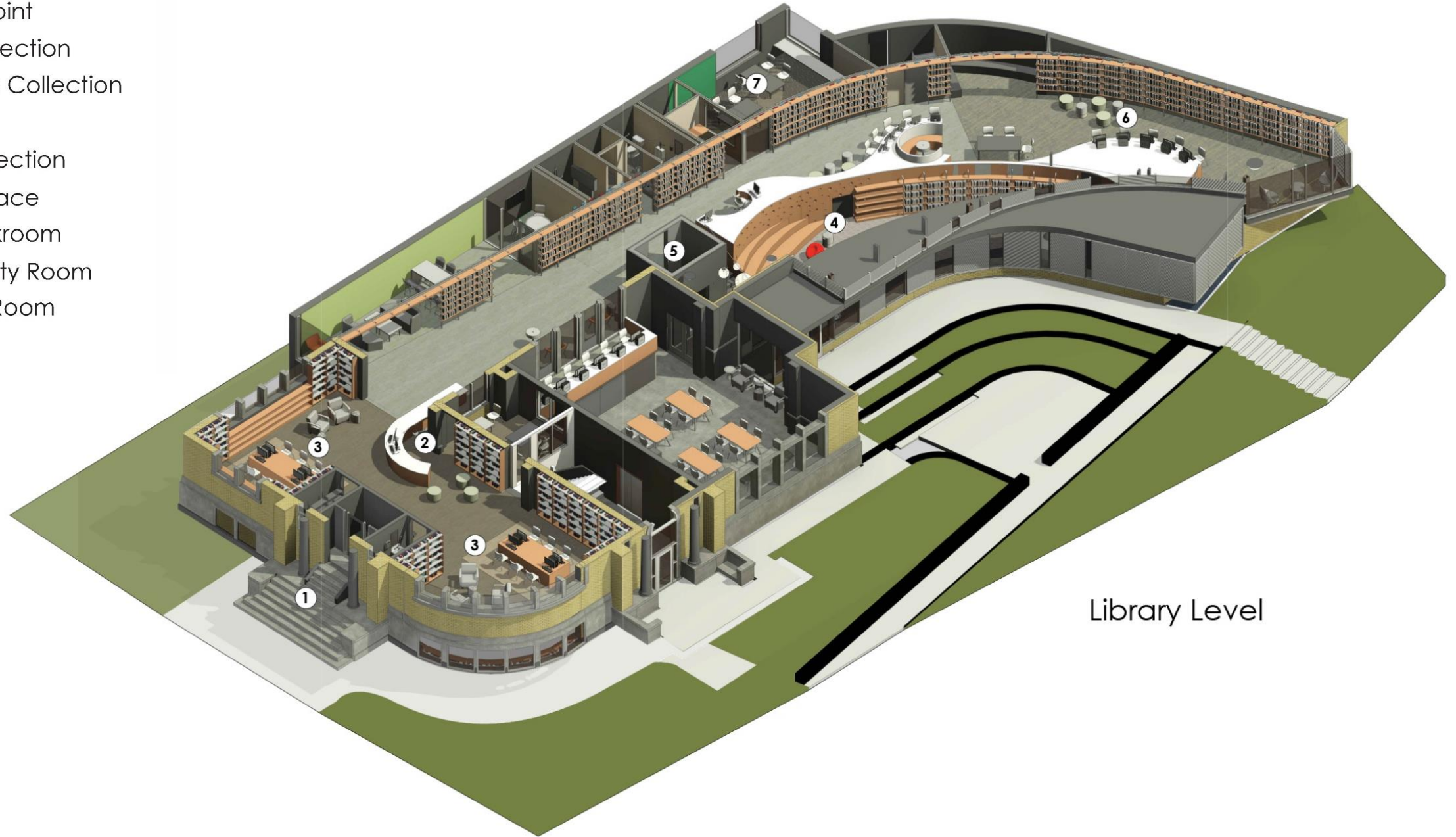




# PORTLAND BRANCH



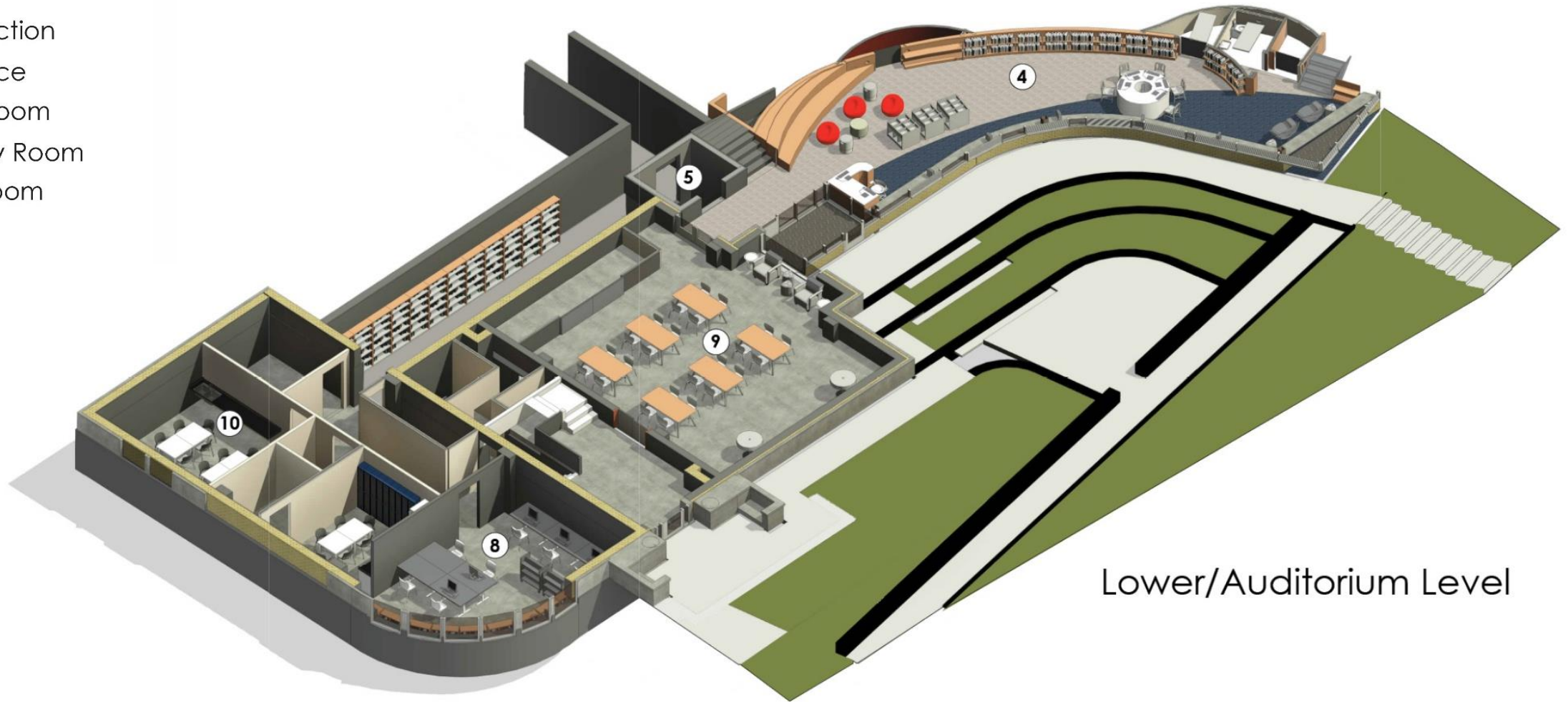
- 1 Historic Entrance
- 2 Service Point
- 3 Adult Collection
- 4 Children's Collection
- 5 Elevator
- 6 Teen Collection
- 7 Maker Space
- 8 Staff Workroom
- 9 Community Room
- 10 Meeting Room



Library Level



- 1 Historic Entrance
- 2 Service Point
- 3 Adult Collection
- 4 Children's Collection
- 5 Elevator
- 6 Teen Collection
- 7 Maker Space
- 8 Staff Workroom
- 9 Community Room
- 10 Meeting Room

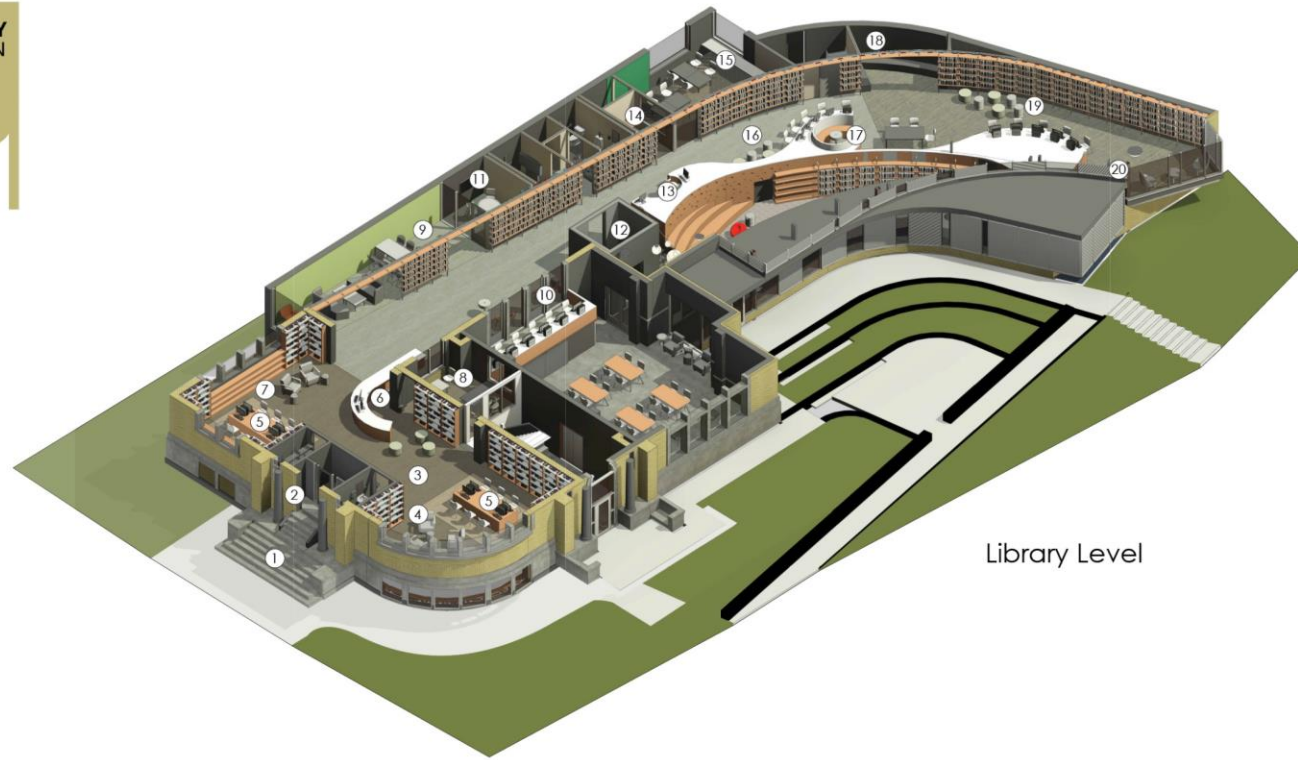


Lower/Auditorium Level

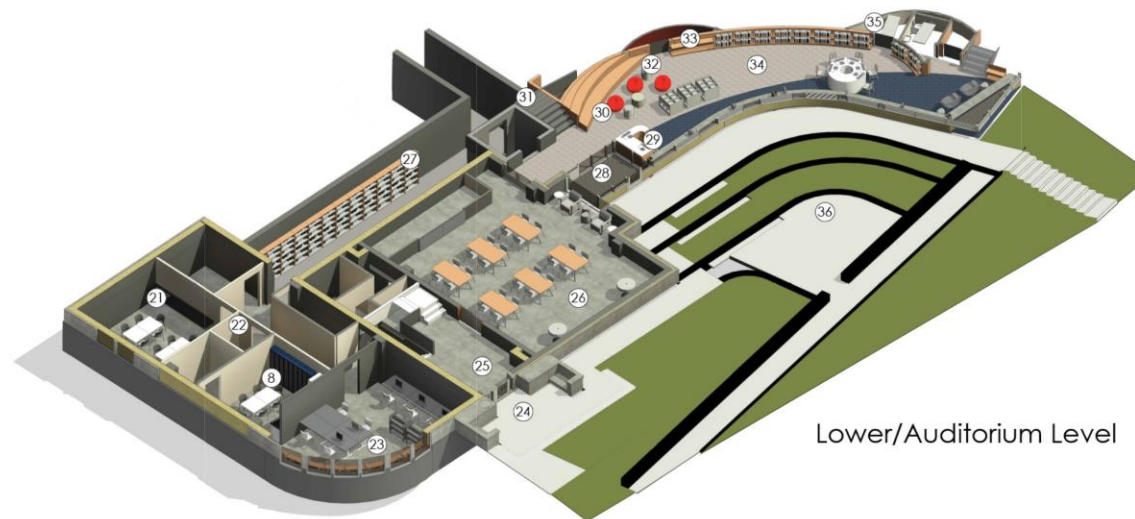
# LFPL PORTLAND LIBRARY BRANCH RENOVATION AND ADDITION



- ① Carnegie Stoop
- ② Carnegie Entrance
- ③ Historic Lobby
- ④ Adult Fiction Reading Room
- ⑤ Adult Tech/Work Tables
- ⑥ Adult Service Point
- ⑦ Adult Non-Fiction Reading Room
- ⑧ Staff Support Spaces
- ⑨ Adult Collaboration
- ⑩ Overlook
- ⑪ Study/Meeting Room
- ⑫ Elevator
- ⑬ Addition Service Point
- ⑭ Recording Studio
- ⑮ Maker Space
- ⑯ Maker Commons
- ⑰ Teen Booth
- ⑱ Teen Niche
- ⑲ Teen Collection
- ⑳ Teen Stair
- ㉑ Meeting Room
- ㉒ Privacy/Mother's Room
- ㉓ Staff Work Room
- ㉔ Historic Community Room Stoop
- ㉕ Historic Community Room Lobby
- ㉖ Community Room
- ㉗ Study Gallery
- ㉘ Vestibule
- ㉙ Staff Touchdown/Self Check
- ㉚ Amphitheater
- ㉛ Addition Stair
- ㉜ Children's Climbing Niche
- ㉝ Children's Reading Niche
- ㉞ Children's Collection
- ㉟ Quiet Room
- ㊱ Courtyard



Library Level

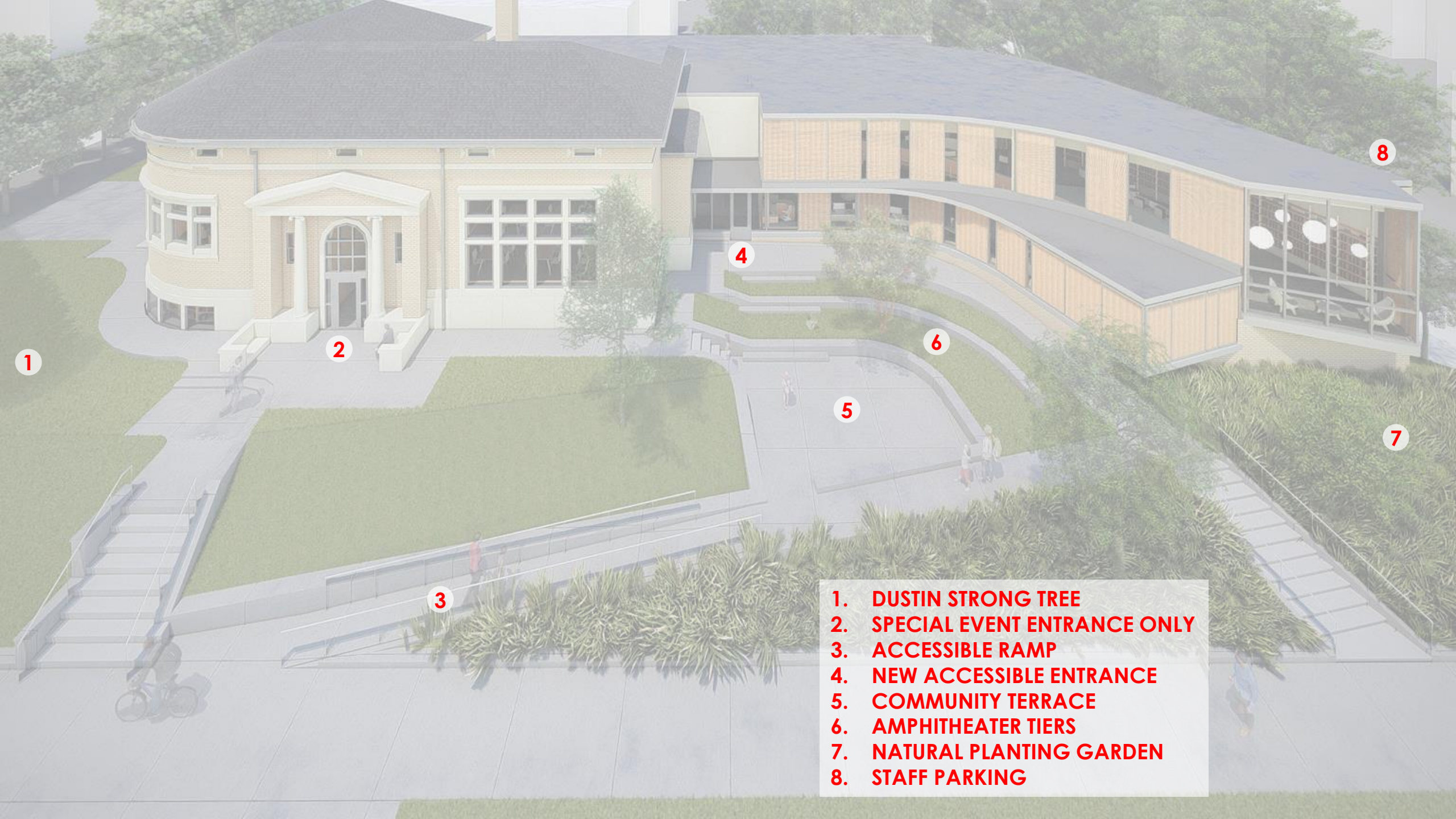


Lower/Auditorium Level







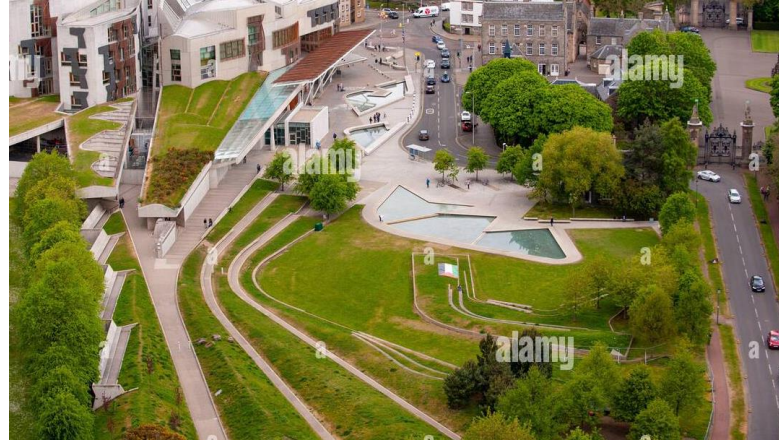


1. DUSTIN STRONG TREE
2. SPECIAL EVENT ENTRANCE ONLY
3. ACCESSIBLE RAMP
4. NEW ACCESSIBLE ENTRANCE
5. COMMUNITY TERRACE
6. AMPHITHEATER TIERS
7. NATURAL PLANTING GARDEN
8. STAFF PARKING





COURTYARD FOCAL POINT



CONCENTRIC BUILDING & LANDSCAPE



WELCOMING, PURPOSEFUL TERRACES



JUST WOOD AND DAYLIGHT



FUNCTIONAL LEVEL CHANGES



KIDS CLIMBING FEATURE



















